

Schussboomer

A NEW SEASON
HAS BEGUN

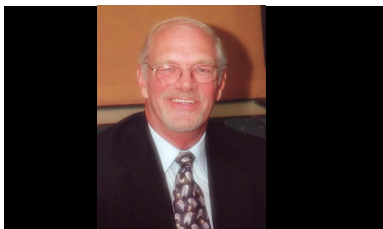


A CLUB FOR ALL SEASONS SINCE 1953

Volume 6 Issue 5: 53rd Year of Publication

Visit us at <http://www.onondagaskiclub.org>

President's Message



Jack Lancette

We had our April meeting last week which officially ends our 2010-11 season. Plenty of snow early and great conditions made the winter over before I knew it. We finished the season with 664 members, 30 more than last year.

The elections were held at the meeting and the membership accepted the recommendation of the BOD and changed our By Law regarding Junior members. Leo Naylor, John Tuttle and Mark Bidwell's terms were extended and we now have four new Board members. Congratulations to Caitlin Devendorf, Steve and Carol Knowles and Dawn Penniman. We also have a new Corresponding Secretary, Pat Ray Toll. New energy and ideas are what we need to keep the Club vibrant and relevant. I'm looking forward to working with everyone.

On the flip side I would like to thank everyone whose terms had expired, Marilyn Woycesjies, Bob Wiley, Arley

Morey, Remo Bianco and especially Marian LaPierre who treated us to her homemade cookies every meeting. They have all left their mark and helped us get where we are today. Bob Wiley will still be contributing as Membership Director. Thanks also to the candidates that ran and were unsuccessful. I've been there and done that and I hope you will consider running next year.

The By Law change removes the bottom age of Junior members. The purpose is to allow younger Juniors access to the discounts afforded to Regular members.

Our tried and true summer activities will keep us busy and fit. Cycling, tennis and golf programs are all in place and ready for us. Jan Carr has the biking schedule posted, Larry Harrison and Anne Sonne are coordinating the golf and new coordinators this season, Joe and Maryann Janson will be running the tennis program. Kayaking, Hiking and of course our very popular Nights on the Town with Norm Pyzynski and Happy Hours with Dianne Emmick and Mary Clay are all part of the planned activities.

You will be able to keep up

to date with everything using our new website at www.onondagaskiclub.org. Jan Carr has been using the Cycling Forum feature to communicate with the members and other program directors will most likely follow. We now have 125 members signed on to the website and we would encourage everyone to utilize the forums. The new website has been in service about six weeks now and has received over 12,000 hits. We will still be using our email program "OSC Happenings" as long as it's needed. Thanks to Debbie Beaumont for helping us out with that.

I hope everyone has a good summer and stays healthy.

Jack Lancette

May-June 2011

EDITOR:

Peggy Hotaling
315.652.3150
peg89@verizon.net

ADVERTISING:

Contact Marian Jerosé
PO Box 415, Tully, NY 13159
TEL: 315-696-6413

CLASSIFIEDS:

Free ads for members only
Please submit ads by email or as a word document to
peg89@verizon.net
Put Boomer Ad in the subject line

GENERAL MEETINGS:

Barbagallo's Diamond Room,
E. Molloy Rd. East Syracuse
2nd Tuesday of each Month
September thru April
7:30 PM Mixer, 8:00 PM Meeting
9:00 PM Refreshments

BOARD MEETINGS:

Location: Varies
1st Tuesday of each Month
7:00 PM Sept. thru Aug.

NEXT BOOMER DEADLINE June 15, 2011

Articles can be sent by email, or as a word document to:
peg89@verizon.net. Put "Boomer Article" in the subject line.

Inside this issue:

PRESIDENT'S MESSAGE ELECTIONS	1
BIG SKY, MONTANA	2
NIGHT ON THE TOWN HAPPY HOUR	3
LODGE INFO BIG SKY, CONTINUED	4
BIKE SCHEDULE BIG SKY, CONTINUED	5
AD	6
OSC CONTACT LIST CALENDAR	7
CLUB CLASSIFIEDS	8

BIG SKY, MONTANA FEB 5—12

Twenty-eight members of the Onondaga Ski Club headed out to Big Sky for a week of hoped for great skiing. Our flight was to connect through Chicago, then on to Bozeman, Montana. Everything was going fine until we boarded the full plane in Chicago where the pilot announced that because of some malfunction with the plane, they had to add 2000 pounds of extra fuel which then made the plane overweight. So there we were on the tarmac, a full load of people and baggage plus the extra fuel. Over the loudspeaker came the call for a total of twelve people to get off the plane, stay overnight, and go out the next day. Two people did get off, but everyone else stayed seated including all us skiers. After a bit of a wait, the captain announced that another plane was set up for us to continue, but it was back on the same concourse that we came in on. A bit of a walk, but soon everyone was belted in, the luggage stowed, and we were in line for take-off.

The local airport for Bozeman is actually in a suburb called Belgrade. From here we boarded the waiting bus for the ride to Big Sky after stopping at the local grocery store for wine/beer and finger food. Much of the ride was through flat land where we could see mountains all around us. Soon the turn came, and we headed up into them. The road twisted and turned amongst some incredible raw rock walls and free-standing spires of the same material. To this writer, it looked like they had been thrust upwards through the earth's crust recently as they were not in the least bit weather-worn down. It was a 'Wow' ride during which big horn sheep were seen.

Arriving at the Huntley Lodge, the staff there took charge of our baggage while we checked in. Once in our rooms, the baggage arrived, and we freshened up to go to the orientation meeting where the Big Sky staff let us know what/where/when while we feasted on finger food/drink provided by them. A pleasant introduction for sure.

Soon all headed back to our rooms for some deserved sleep, at 7500 feet of elevation.

Sunday, day one. After the lodge provided buffet style breakfast of anything one could want, a lot of us met at the base of a lift to take the available mountain tour with an ambassador... or three. We had a big crowd, so we broke into three groups and followed our leader(s) for the greens and blues tour. It was a great way for everyone to get acquainted with the place, and pick up some do's and don'ts. The 'don't' I remember was if you see an area of what appears to be untracked powder in an area of tracked snow, don't just jump in. There's likely a very good reason that snow is untracked (locals know the area pretty well).

We spent the morning on the tour, and then everyone took off to do what they wanted where they wanted. Some new snow had fallen, so there was something for everyone. I tried to take it easy, this being the first day at high altitude, but of course got the old thighs a little sore and all. I think others of our group felt similar by the end of the day.

This evening we took over the floor we were on for our Super Bowl party. The finger food and various beverages were in the hallway, and we set our butts on whatever was in the Nichols room to watch Green Bay just barely beat Pittsburg. It turned out to be a good game too.

Each day here-on except Wednesday, the morning routine at the buffet was followed by gearing up and heading to higher altitudes to enjoy the many, many trails and chutes and glades and terrain parks and vistas Big Sky offers. I kid you not, this place is huge, bigger than even Billy's sales, if you know what I mean. Consider this; Labrador Mountain here in CNY is about 250 acres. The beginners area at Big Sky is 534 acres, intermediate at 991, advanced at 1,525, and the double D area is 762. Vertical drop is 4,350 feet. There is something for everyone here, and it butts up against another area called Moonlight Basin for another 1700 acres. If you can't find something enjoyable here to ski on, take up another sport.

The lift lines were non-existent for the most part, the only wait perhaps at the tram that took you to the very top of the world (as far as I was concerned), Lone Mountain at 11,166 feet. The tram ride took 3 minutes to get up or down, 2828 feet of suspended cable from the moving bottom to the peak. Yes, moving bottom. The base of the tram is anchored to glacier rock which is actually moving away from the peak. Since it opened in the late '90s, it has moved 11 feet.... but what a view from up there. 360 degrees of mountains stretching in all directions, and you can look down into the valleys below, so far away (I was down there, now I'm up here...wow). For those expert enough, skiing down from the top was an option. Many in our group did it, and they all were able to walk to the plane for the trip home. In fact, although there were a few falls and such, everyone on the trip made out ok, except maybe Doug. Doug's an expert skier, but he did find a tree that took exception to that. Apparently there was a branch that reached out and hit him on the sternum hard enough to leave a lasting impression.

the **bikery** Since 1973



7556 Van Buren Road - Baldwinsville, NY 13027

ROAD BIKE SPECIALISTS

**Road - Triathlon - Hybrids - Mountain - BMX
Trek - Cannondale - Giant - QE - Haro**

www.thebikery.com

315.638.2161



General Memberships as low as \$33/month

Personal training available

310 Towne Drive

Fayetteville, NY

Mike Constantino

Owner

315-632-4410

NIGHT ON THE TOWN MAY & JUNE

May Night on the Town

Friday, May 13

Daniel's Grill

69 North St. Marcellus

Cocktails at 6pm, dinner at 6:30 pm.

Daniel's will do couples checks.

June Night on the Town

Friday, June 10

Pascale's Restaurant

Limestone Plaza in Fayetteville

PLEASE NOTE: MEET FOR COCKTAILS AT 5:30PM,
DINNER AT 6 PM.

PASCALE'S WILL NOT DO COUPLES CHECKS

For reservations and information please contact
Norm at 487-6848 or at LNKP@EARTHLINK.NET.

HAPPY HOUR

Happy Hour for May

Tuesday, May 17

Koto Japanese Steak House

2841 Erie Blvd East

Syracuse

Happy Hour at 5 p.m.

For those who want to stay for dinner, we'll ask
for seating around 6:15

½ price wine and drafts

House wine - \$2.50

Draughts - \$2 - \$2.50

Some appetizers provided by club

See www.kotosyracuse.com for menu

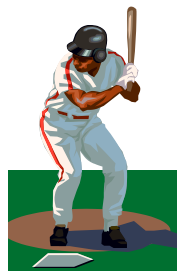
Dinner prices start around \$15; appetizers,
sushi, and noodle dishes less

Contact Dianne Emmick or Mary Clay for details

YEAR ROUND FAMILY FUN

**Batting Cages - Parties - Mini Golf
Golf Practice Range - Golf Lessons
Soccer Cages**

5 Automatic Batting Cages



**HAVE YOUR OWN GROUP
PARTY :**

**Birthday, Soccer, Golf, Bat-
ting**

FOUR SEASONS

Golf & Ski Center - 637-9023

8012 East Genesee Street, Fayetteville, NY 13066

Just across from Green Lakes State park

OSC's Vermont Ski Lodge (For usage rules & directions see our website—www.osc-ski.org)

Lodge Rates: Dormitory \$22.00 per person, per night Private Room \$44.00 per night
(Rate may vary for rooms #4 and #7 if used by more than 2 people.)

Cancellation Fee: \$5.00

Check In: 12 Noon **Check Out:** 12 Noon

USE ONLY THE ROOM YOU RESERVE;

THE LODGE CAN BE USED BY MEMBERS ONLY.

FAMILY DATES: See our website @ www.osc-ski.org.

Reservations: For reservations call: DAVE and DIANE CLARK, (315) 635-1686. If you get the answering machine, please leave your name, telephone number, the dates that you would like to use the lodge, and number of people. The reservationist will return your call.

Payment in advance is required and must be made within 5 days of making the reservation. All paid reservations will be given preference over unpaid reservations. Reservations may be made up to six months in advance.

Send reservations and payment to: DAVE CLARK, 1924 Hoag Rd. W., Warners, NY 13164

Discount Ski Tickets: (For Onondaga Ski Club Members Only) are available for Vermont area ski resorts near the club lodge. Sugarbush lift ticket for only \$60. To check all Vermont Lift ticket prices, go to the OSC website and click on the Hot Deals Button. For availability at other Vermont Mountains and to Purchase tickets, contact Dave and Diane Clark, e-mail: dclark1924@gmail.com or US Mail: Dave & Diane Clark, 1924 Hoag Road, Warners, NY 13164.

What to bring: For your stay at the OSC Lodge in Lower Granville, Vt., you will need to bring sheets, towels, pillow cases, or sleeping bag and pillow cases. Blankets are provided. Also bring any food and drink you plan to consume during your stay. The kitchen is fully equipped. Please bring your recyclables home with you.

NOTICE: THE COMBINATION TO THE LOCK ON THE FRONT DOOR OF THE LODGE CHANGES FREQUENTLY. Obtain the Lodge front door lock combination prior to Leaving for the lodge. Call the reservationists, Dave and Diane Clark @315-635-1686, to obtain the lock combination before you travel to the Lodge.



Lodge Regulations:

Anyone not following the rules of the lodge listed in the kitchen may have privileges revoked at the discretion of the Lodge Committee.

Lodge Phone Number:
(802) 767-3234.

BIG SKY, MONTANA FEB 5—12

An experience I had was catching a tree trunk with the tip of one ski thereby making me a single ski skier in the powder in the woods, but only for a second or two. I went headfirst into a clearing of powder where I was lucky not to get buried. Funny thing about powder, it's great to float through, but hell to walk/wade/crawl through. Trying to get back up on my skis must have been funny to watch. I was up to my waist in snow pulling myself up a tree trunk so I could get a boot in a binding. For a moment or two I wasn't so sure I was going to get out of the woods without help.

Wednesday dawned very clear, which also meant it was very cold. Our leaders Diane Clark and Peggy Hotaling had set up a side trip to Yellowstone National Park, so a bunch of us grabbed our box breakfasts and got on the bus. Here the driver informed us that the temperature at the park when she set out was a balmy 36 degrees, below zero! By the time we got there, it had dropped a degree. The sun was out and no wind, but still 37 below? Fortunately most of us were going on the tour from a heated and track driven bus (think of tank track). A few members were going to take the optional self-driven snowmobile tour. I think they had to wait until the temperature came up to, oh, 20 below or something like that. In special insulated suits/helmets/boots/gloves, these hardy souls had an experience only they can tell you about.

Our tour bus driver/guide, a retired college instructor, filled us in with details of the park, pointed out interesting sites/things/creatures. One creature we all gained some respect for was the bison, which roam freely throughout the park (and more it turns out). Bison with curved horns are female, and they usually lead the herd wherever she wants to go. Males have horns that are straighter, and sometimes become crotchety loners that are to be avoided. They have been known to butt the tour vehicles, even move them a bit. The rule in the park is to give the bison room, back away from them, and if on foot, try to keep something substantial between you and them if they approach. On one of the walking sections of our tour, we were on a boardwalk by some geysers, and the bison herd was walking past on either side of us. We waited for them to pass.

Old Faithful was pretty much on time, and we learned the entire area was once a volcano that blew pretty much straight up, then sank down flat unlike the typical cone shape most associate with volcanoes. That's why the geysers are there. Water sinks down through the rhyolite which is porous unlike the impregnable basalt one sees in a volcano on Hawaii. This allows for a regeneration of the water supply for the geysers. Our driver said the water we saw in the geysers likely was snow some 50 years ago.

2011 Bike Schedule - Contact Jan Carr for details @315.727.8151

<u>Date</u>	<u>Time</u>	<u>Location</u>
May 01	12:00 PM	Sunday ride at Jan's
May 04	6:00 PM	Oneida Shores, Brewerton
May 11	6:00 PM	Oneida Shores, Brewerton
May 18	6:00 PM	Onondaga Lake Park, Long Branch end
May 25	6:00 PM	Onondaga Lake Park, Long Branch end
Jun 01	6:00 PM	Tully Burger King (back parking lot)
Jun 08	6:00 PM	Tully Burger King (back parking lot)
Jun 15	6:00 PM	Camillus, Reed Webster Park
Jun 19	9:00 AM	Sunday ride around Oneida Lake (Short ride starts at 11:00 AM)
Jun 22	6:00 PM	Camillus, Reed Webster Park
Jun 29	6:00 PM	Camillus, Reed Webster Park
Jul 06	6:00 PM	Great Northern Piano and Organ Store (change this year)
Jul 13	6:00 PM	Great Northern Piano and Organ Store (change this year)
Jul 20	6:00 PM	Tully Burger King (back parking lot)
Jul 27	6:00 PM	Tully Burger King (back parking lot)
Aug 03	6:00 PM	Lysander Park, Smokey Hollow Road
Aug 10	6:00 PM	Lysander Park, Smokey Hollow Road
Aug 17	6:00 PM	Lysander Park, Smokey Hollow Road
Aug 24	6:00 PM	Lakeland Park (off State Fair Blvd)
Aug 31	6:00 PM	Lakeland Park (off State Fair Blvd)
Sep 07	5:30 PM	Green Lakes Park
Sep 14	5:30 PM	Green Lakes Park
Sep 21	5:30 PM	Green Lakes Park
Sep 28	5:30 PM	Wrap Up Party Spaghetti Warehouse, 5:30 cocktails, 6:30 dinner



BIG SKY, MONTANA FEB 5—12

up on the mountain. It seems this person wanted to be in the exact place Bob was at the same moment, so slid right into Bob causing no damage, but an exciting moment none-the-less.

Yellowstone should be on everyone's 'bucket list'. Try to arrange your visit in early spring or late fall to avoid the massive crowds of summer our tour guide suggested. Or go in the winter like we did.

Back at Big Sky to enjoy the remaining time we had, Thursday and Friday were spent skiing to our heart's content, then shopping, of course. Each evening we'd have our derigueur' happy hour down in the main commons area where there was a big fireplace. We'd swap tales of the day's adventures, decide on places to eat dinner, and get entertained by a fashion show of sorts. Right off this area is a store that deals in furs and such, and some of the ladies were definitely enjoying trying on this and that, then 'parading' around with really big smiles on their faces. I don't think anything of a real large dollar value was purchased, but ya never know.

Friday night we headed down to Buck'sT4 eatery in the village for one last big meal in the Big Sky area as we were flying out the next day. Buck's is a large place with intimate rooms off to the sides, a large game room (electronics and real pool table), and two large dining areas plus a bar area. Oh yeah, outstanding food; bison, elk, local caught trout, etc. You can check out their menu on line at www.menuclub.com. They even sent a bus for us, then took us back to the lodge after we finished. How's that for service?

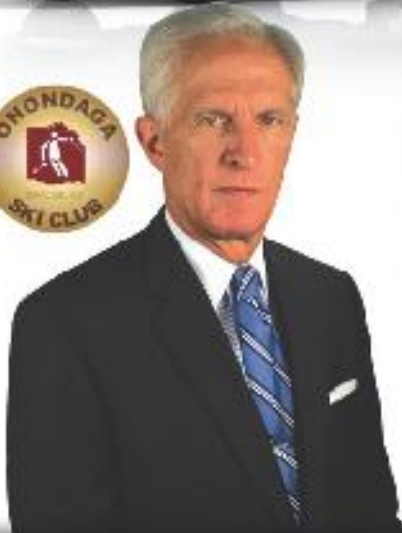
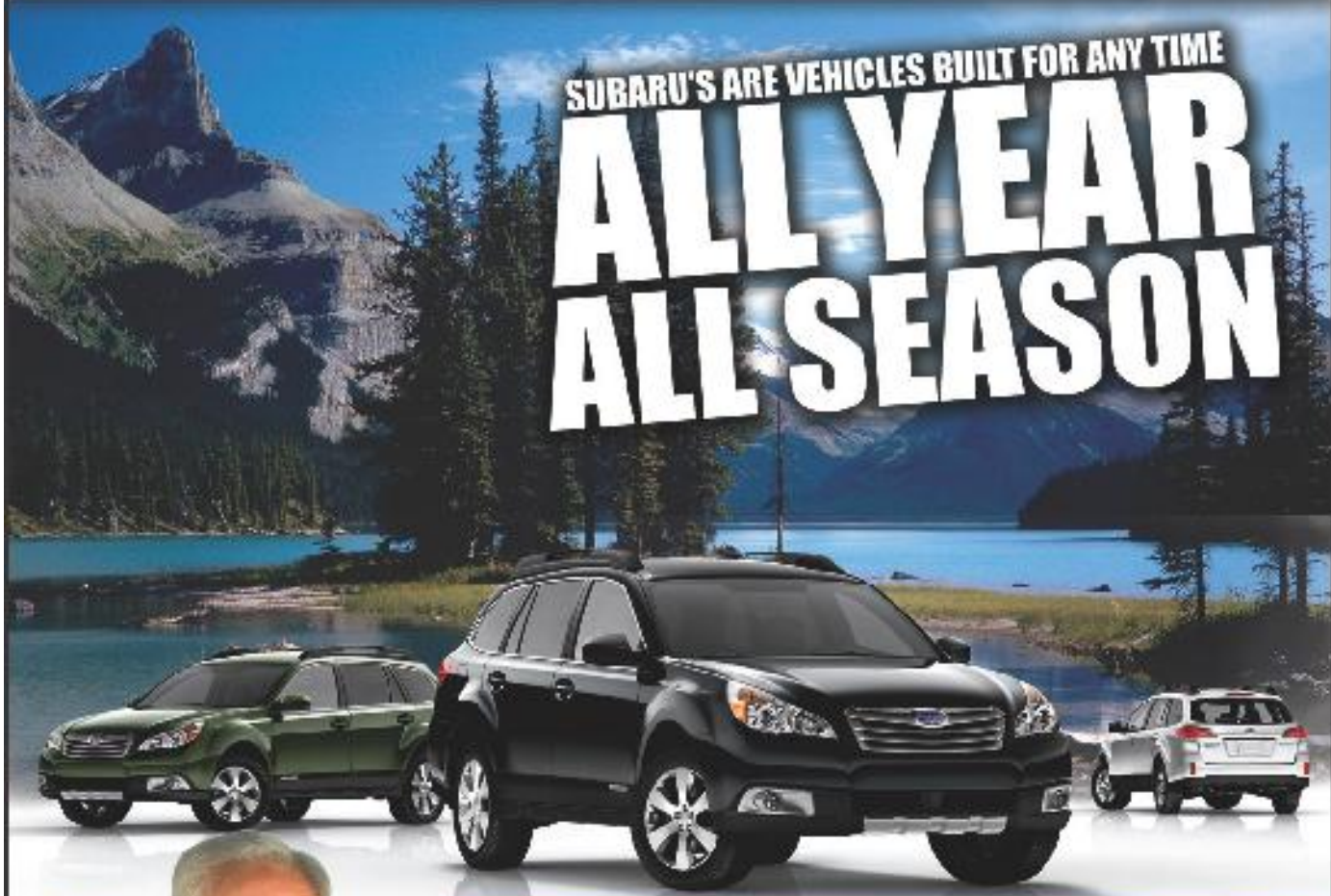
Real estate around there is somewhat pricy. One private lodge for sale was priced at over 5 million bucks. We talked about this at one of our happy hours, and for that amount of money, one could take 2000 \$2500 ski trips. Seems like a no-brainer to me, but hey, Bill Gates has a place there. Anyone know Bill?

Seriously, the 28 members that took in this year's ski trip had a wonderful time, and all would comeback again. Just ask them. Huge mountain, wonderful terrain, super friendly and helpful staff everywhere, good eats. If another trip is planned for Big Sky, sign up early. You will never regret it.

Michael McCabe

BILL RAPP  SUBARU.

SUBARU'S ARE VEHICLES BUILT FOR ANY TIME
**ALL YEAR
ALL SEASON**



Your Subaru Certified Sales Rep
Frank Wiechowski
National Ski Patrol Labrador Mountain

For information on your ski club discount, please contact
your ski club representative Frank Wiechowski at 315.437.2501

ALL SEASON CERTIFIED PRE-OWNED SUBARU'S
VERY LOW PRICES ONLY AT BILL RAPP SUBARU

CERTIFIED PRE-OWNED
 SUBARU

BILL RAPP  SUBARU. 315.437.2501 3449 Burnet Avenue,
Syracuse, NY 13206

WWW.BILLRAPP.COM

OSC CONTACT LIST

Officers (7)

President: Jack Lancette ('12)	454-0852
1st Vice President: Leo Naylor ('13)	339-3741
2nd Vice President: Dave Devendorf ('12)	652-6706
Past President: Marv Patnode ('12)	409-4531
Treasurer: John Tuttle ('13)	637-0211
Recording Secretary: John Sonne ('12)	487-6126
Corresponding Secretary: Pat Ray Toll ('13)	491-4517

Board Members (12)

Scott Severance ('12)	382-2867
Art Toll ('12)	415-3295
Mary Ann Zeppetello ('12)	632-4951
Joann Butler ('13)	655-9005
Diane Clark ('13)	635-1686
Neville Sachs ('13)	487-8110
Allan Smith ('13)	699-4661
Mark Bidwell ('14)	423-3232
Caitlin Devendorf ('14)	
Carol Knowles ('14)	345-2457
Steve Knowles ('14)	833-9219
Dawn Penniman ('14)	463-3032

Committee Chairs

<u>Activities:</u> Biking (Wed Night): Jan Carr	727-8151
Cross Country Skiing: Mary Clay	218-7390
Golf: Larry Harrison	430-8925
Hiking & Canoeing: John Whelan	475-9888
Ski Racing: Marv Patnode	409-4531
Ski School: Jeff Jacobs	425-5243
Tennis: Maryann & Joe Janson	672-9710

<u>Community Outreach:</u> Marilyn Woyciesjes	428-0275
Adopt-A-Highway: Carol Adamec	487-8110
Neville Sachs	487-8110

Communications:

Calendar: Donna Willis	677-9024
E-mailings: Deb Beaumont	440-5622
Newsletter Editor: Peggy Hotaling	652-3150
Mailing: Mary Clay	218-7390
Advertising: Marion Jerose	696-6413
WebSite: Dave Devendorf	652-6706
Marv Patnode	409-4531
Lodge: Ken Robbins	263-4405
Allan Smith	699-4661
Reservations: Dave & Diane Clark	635-1686
Lodge Phone, Lower Granville, VT:	(802)767-3234

<u>Marketing Committee:</u> Marv Patnode	409-4531
Public Relations: Dianne Emmick	468-2975

<u>Membership:</u> Bob Wiley	696-6413
------------------------------	----------

<u>Nominating Committee:</u> Marion LaPierre	445-2275
--	----------

<u>Social:</u> Janice Farrelly	487-0518
Happy Hour: Mary Clay	218-7390
Dianne Emmick	468-2975
Hospitality: Ken and Kay Kotwas	458-8928
Night-On-The-Town: Norm Pyzynski	487-6848
Programs: Gary Woolschlager	414-0459

<u>Trips:</u> Leo Naylor	339-3741
--------------------------	----------

Calendar: (For more activities, visit www.onondagaskiclub.org)

May 13: Night on the Town. Friday, Daniel's Grill 69 North St. Marcellus. Cocktails at 6pm, dinner at 6:30 pm. For reservations and information, contact Norm at 487-6848 or at lnkp@earthlink.net.

May 17: Happy Hour Tuesday, Koto Japanese Steak House, 2841 Erie Blvd East, Syracuse. See page 2 for more details

June 10: Night on the Town. Friday, Pascale's Restaurant Limestone Plaza in Fayetteville. PLEASE NOTE: MEET FOR COCKTAILS AT 5:30PM, DINNER AT 6 PM. For reservations and information, contact Norm at 487-6848 or at lnkp@earthlink.net.

Advance Cyclery
Sales & Service

Call or stop in to receive discounts.

118 Seeley Road
Syracuse, NY 13224
www.cnybikes.com

(315)449-2453 BIKE
(315)449-0936 fax



Organization

Onondaga Ski Club

Place
Stamp
Here

Onondaga Ski Club
P.O. Box 8025
Teall Station
Syracuse, N.Y. 13217
Phone: 315-454-0852
Web: www.onondagaskiclub.org

CLUB CLASSIFIEDS

For Sale: Back Rack 1 Mountain and Hybrid 20" and smaller Road 56cm and smaller Bike rack - \$20.00 New still in package (originally \$44.95) Contact Diane 635-1686.

Mountain Bike Shoes: Diadora Raptor, Black, Size 38, SPD Shimano Cleats, slightly used Price: \$30.00.
Diadora Chili Mountain Bike Shoe, Black, Size 38, SPD Shimano Cleats, brand new, \$40 Ellie Sheldon Phone: (315) 668-3047
Email: esheldon001@twcny.rr.com

SPECIALIZED Model SR SUNTOUR Comfort (Hybrid) 21 speed Bike 700 38C tires, front shocks and seat with springs includes bottle and rear rack. Used primarily one season - less than 200 miles. Cost new at \$420 - Asking \$250. Call Conrad at 655-2752



GARY FISHER
LEMOND
TREK
LEMOND SPIN
CYCLES

Route 92,
Beautiful downtown Manlius, NY.

(315) 682-1449



Long Term Care
SPECIALISTS

Mary P. Huntington, CSA, CLTC
Certified Senior Advisor

(315) 696-5813
(800) 484-7246, code 5827
MaryLTC@twcny.rr.com
(315) 263-5813 (cell)

www.LTCSpecialists.net

P.O. Box 6737 • Syracuse, NY 13217-6737